

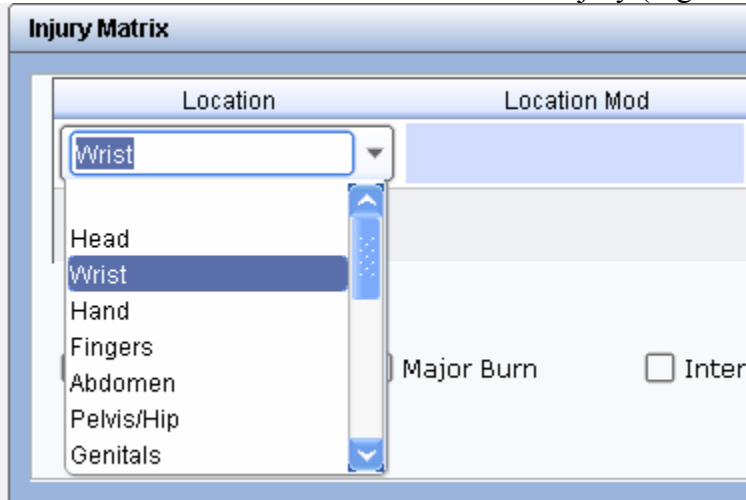
Sansio HealthEMS Mobile scheduled to be updated be upgraded to the latest version effective November 29, 2010 at 0900. There are several behind the scene changes but the following changes will be visible to the user. Please make sure you review these changes.

- When exporting the Mobile PCR there will be a confirmation box that the “appropriate signatures were obtained” prior to exporting the PCR.
- There will be a small image in the footer of the PDF version of PCRs.
- The Injury Matrix has been completely re-written to make it easier to understand and work with. The new format is similar to the Vitals and Flow Chart sections in that it is now in a tabular format with drop down lists and check boxes for documentation.

Sansio has configured the Location, appropriate Location Modifiers, Injury Types and Injury Modifiers based on the previous body-figure matrix. Additional changes will be made in future versions.

The injury matrix will be changed to a “Pull Down” format.

The first column denotes the location of the injury (Figure 1)



The screenshot shows a form titled "Injury Matrix" with two columns: "Location" and "Location Mod". The "Location" column has a dropdown menu currently displaying "Wrist". The dropdown list is open, showing the following options: Head, Wrist (highlighted), Hand, Fingers, Abdomen, Pelvis/Hip, and Genitals. The "Location Mod" column is currently empty. Below the "Location Mod" column, there are two checkboxes: "Major Burn" and "Inter".

The “Location Mod” column will allow a Modifier to be added for the injury type. This will not work for all injuries but will allow the user to add a side of the body and or whether the injury is internal or external (Figure 2)

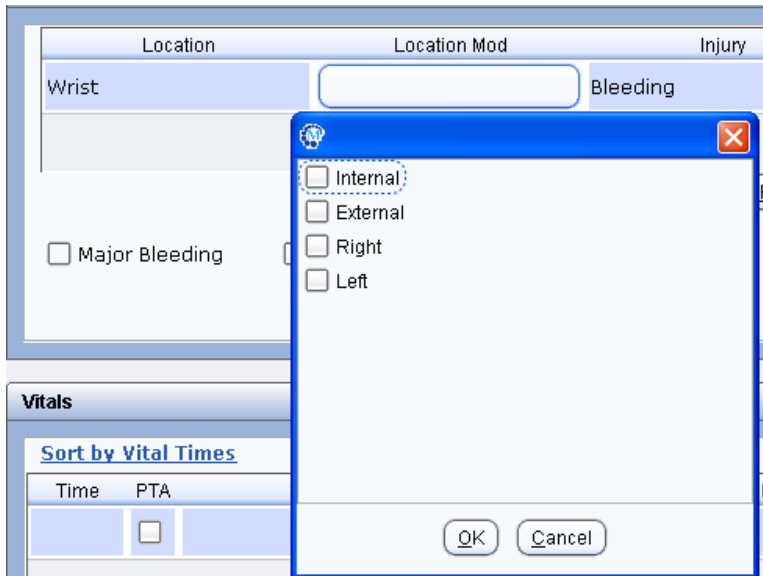
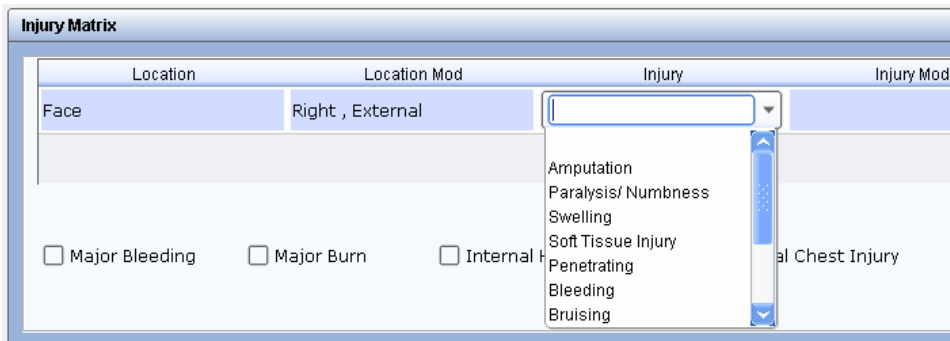
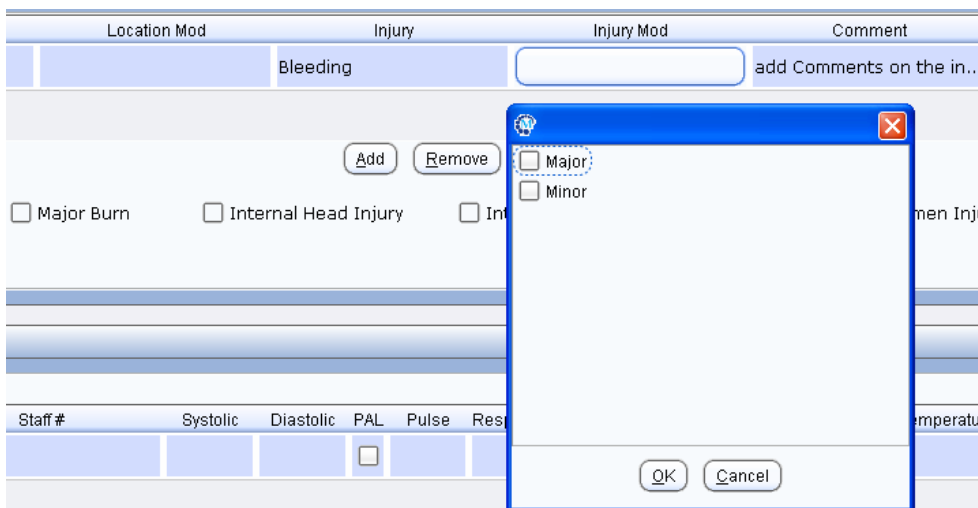


Figure 2

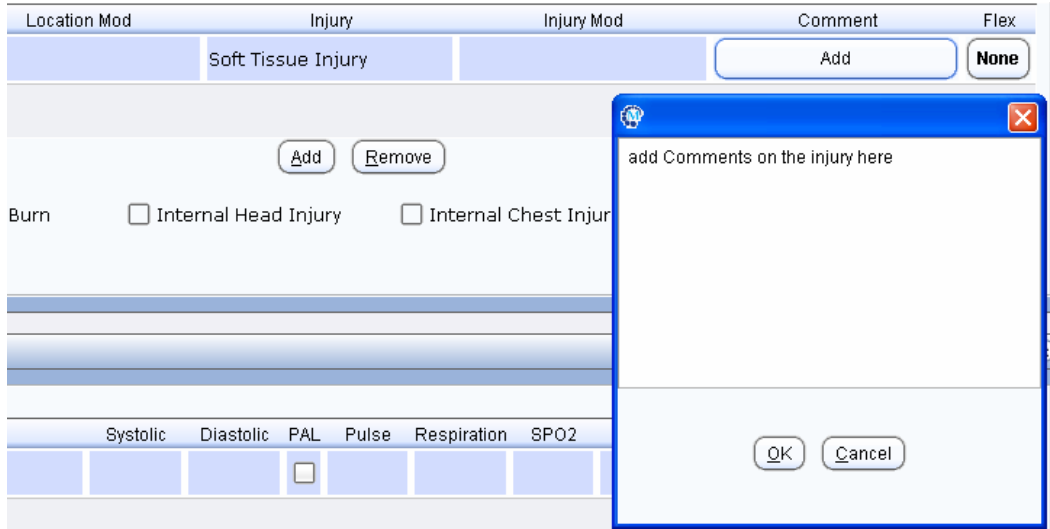
The “Injury” is a “Pull down” list to select the type of injury. See figure below.



The “Injury Mod” is a pop up box that allows the modifiers of “Major” or “Minor” to be added to appropriate injury type. See below.



The “Comment” area is a pop up box that will allow comments to be added for the injury listed.



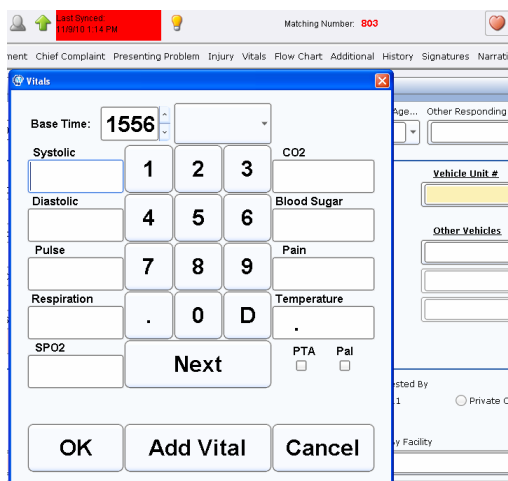
Addition of STEMI to the Rhythm

Several unit measurements were added including cmH2O for CPAP

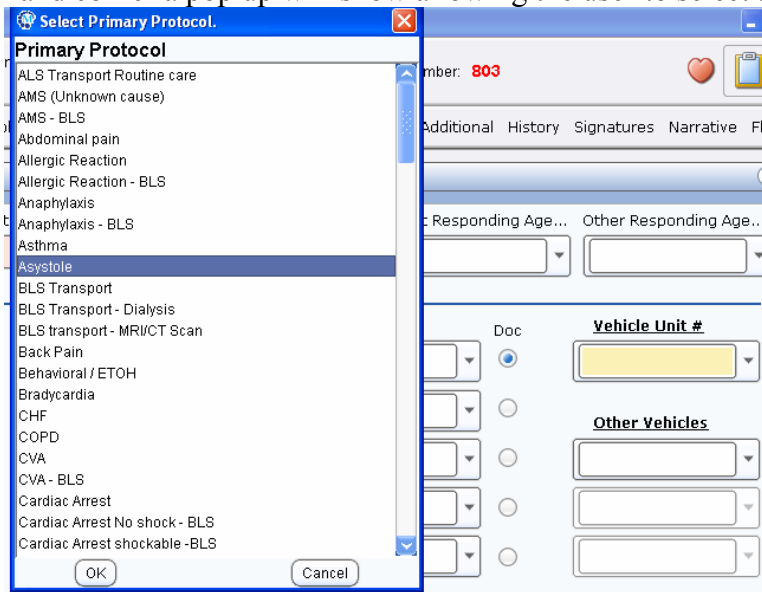
The Area of Impact/Damage label "Driver Front Fender" has been changed to "Driver Front Bumper" and "Psngr Front Fender" has been changed to "Psngr Front Bumper" in the Vehicle Accident / Safety Equipment section.

A configuration option is now available that would allow automatic faxing of ePCRs when exported from Mobile if the Transport To Facility has Fax configured as the primary distribution method. We will activate this feature and select certain facilities to automatically send the ePCR to the fax machine for the user. We are also going live with the fax numbers for all of the units at Middlesex Hospital effective December 1, 1010 and these will be automatically faxed when the PCR is exported to the secured fax machines on the Middlesex Unit selected as the “Transport To” location. This includes the ED and the two satellite EDs.

As a reminder, there are several functions that make doing the PCRs easier. The first is the quick vitals feature. This is activated by clicking on the red heart on the upper right of the screen. This will give the documenter a pop up and allow vitals to be placed into the system by using the touch screen and can add several sets of vital signs in a row. See figure to the left.



Another item is the use of protocol function. This is set up for several of the protocols Hunters is using in the HEMS system. When the clipboard is selected in the upper right hand corner a pop up will show allowing the user to select a protocol from the list.



(Protocol pop up)

If a protocol is set up in the system, another pop up will reveal itself showing the treatment and medications normally associated with this protocol. The user can globally select a technician for the treatment and medications by picking a crew member from the pull down list. See below.



The documenter can then globally add one to each of the treatment or medication by clicking on the “+” sign near the treatment or medication. The user can add one individual treatment or medication by clicking in the title of the treatment or medication. To remove a unit click on the “-“ that is to the right of the treatment or medication. The user can have the option of adding multiple items together by clicking on the “Add protocol” button. This will enter the information into the Flow Chart and then “zero” the values in the pop up to allow addition of additional information. Example: In a cardiac

arrest the user can click on the “+” for treatments then “-“ of the items not performed. Click on “Add Protocol” and then add epinephrine and atropine for a certain time. Click on “Add Protocol” then add an addition atropine and a vasopressin for a different time the “Add Protocol” to place these two items with their times onto the Flow Chart.

The user can also add the protocol into the “Protocol 1” location by checking the box at the bottom of the pop up.

As usual, if you have any questions please contact an EMS Operations Coordinator, EMS FTO or the QA Office.